



TANKS CONNECTED PTY LTD

Company Profile

Managing Director: Sean Gough

Company Reg no: 2012/026062/07

VAT Registration no: 73007780667

Mobile: +27(0) 64 481 1971 / +27(0) 61 262 9964 / +27 (0) 62 945 4389

Fax No: +27 (0) 86 672 0062

Head Office: 6 Casuarina Avenue, Woodgrange, Hibberdene, KZN, South Africa, 4220

Postal Address: P.O. Box 118, Hibberdene, KZN, South Africa, 4220

[Our Website](#) [Contact us](#) [Facebook](#) [Twitter](#) [LinkedIn](#)

Overview



Founded in 2012, **Tanks Connected PTY LTD** offers a wide range of customized Bolted Liquid Bulk and Dry Bulk Storage Tank Systems, Solutions, and Services.

What We Offer

A variety of **Bolted Liquid Bulk Storage Tanks** with the following coatings:

Glass-Fused-to-Steel, Galvanized Steel, Full Stainless Steel, Epoxy Coated, and Lined Tanks.

Bolted Dry Bulk Storage Tanks for Mining & Minerals, Oil & Gas, Food & Beverage, Power Generation, and Dry Bulk Silos for the Agriculture industry.



Unique Roof Cover options:

- Compression Ring Steel Roof with 12:2 Slope
- Low-Cost Flat Roof Systems
- Aluminum Geodesic Domes Roof Covers
- Double Membrane Covers for Bio-Digesters
- Variety of Internal Floating Roofs

A wide range of **Tank Accessories**, Valves, and Control Valve Product Lines.

Routine standard **Tank Inspection and Performance Testing**.

Modifications and Repairs to uphold new industry requirements.

Our products and services are recognized in the industry for setting a new benchmark of quality and performance in integrated storage systems.



Tank Connected PTY LTD is committed to providing superior quality, defect-free products.

Our team and partners are experienced in above-ground dry bulk and liquid bulk storage applications.

We consistently supply products that meet and exceed our customers' requirements and expectations.

Bolted Cylindrical Liquid Storage Tanks

Tanks Connected PTY LTD provides epoxy-coated **Bolted Flat Panel Cylindrical Steel Tanks** that offer outstanding performance, reliability, with ease of installation.

Our partners have decades of experience, as well as state-of-the-art laser fabrication, and industry-leading **Glass Lined** or **Epoxy Powder Coating Paint Systems**.

They provide the most cost-effective solution for any volume of storage you require.



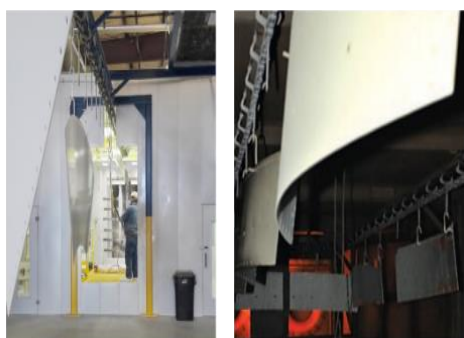
Controlled Environment Epoxy Paint Coating



The panels are finished with a **thermal fusion bonded epoxy powder coating**. The **epoxy powder coating** techniques used result in superior coverage that ensures long-term service in the field.

Powder coating is electrostatically applied and thermally cured, all within a **factory-controlled climate** which equates to extremely low emissions for an environmentally friendly production.

The tanks are **Brace-Free** and with proper maintenance could last for decades.



Dry-Bulk Storage Tank - Silo's



Tanks Connected PTY LTD

is your single source designer and manufacturer for Bolted Dry Bulk Silos.

Our silos can be used to store a wide variety of dry bulk solids, which include:

- Gravel
 - Coal
 - Sand
 - Cement
 - Woodchips
 - Carbon Black
 - Food Products
 - Sawdust
-



In addition to storage purposes, the silos can also be used to fill a dump truck or bulk trailer with the stored material.

The silos are typically categorized into three basic arrangements regardless of their construction methods:

1. **Fully Skirted** with the silo cylinder walls extending all the way to grade and with the elevated hopper outlet cone contained within.
2. **Short Skirt** with an abbreviated cylinder wall that only extends a few feet below the hopper/sidewall connection point. This design allows for placement on elevated structures.
3. **Flat Bottom** is used for exceptionally large volume applications in conjunction with mechanical or pneumatic reclaim equipment.

Their **flat seam, field-assembled design** is the most advanced technology in the Bolted Dry Bulk Tank industry.

The flat panel design provides a **superior smooth interior wall** surface.

Aluminum Geodesic Domes



Tanks Connected PTY LTD offers a range of above-ground storage tank **Aluminum Geodesic Domes**.

Aluminum Geodesic Domes are the superior structure cover design solution for any storage tank application.

The **Geodesic Dome** has a creative component design yield and structures that cannot be achieved with any other materials. It is preferred because of its corrosion resistance and low maintenance costs, as well as clear span capability, fast and low-cost construction, and excellent strength-to-weight ratio.

Grain Silos for Agriculture



MAKE THE SUPERIOR CHOICE

We understand it's not just grain, but your livelihood that our products protect. Therefore, all our grain storage, handling, and conditioning equipment are built with the finest materials.

We use only the best construction methods and proven designs, which combined with our commitment to superior service and in-the-field experience makes **Tanks Connected PTY LTD** the only choice.



Storage Tank Liners

SUR-SEAL LINERS is a specialty manufacturer that fabricates flexible drop-in liners for corrosion control in tanks.

With more than 25 years in both the storage tank industry, SUR-SEAL LINERS offers competitive solutions for any project.

Every Liner is backed by a 10-year material warranty.



Aluminum Internal Floating Roofs



Tanks Connected PTY LTD offers a range of **Aluminum Internal Floating Roofs** for above-ground storage tanks. Constructed from a variety of materials for product compatibility, our internal floating roofs are customized specifically for each storage tank.

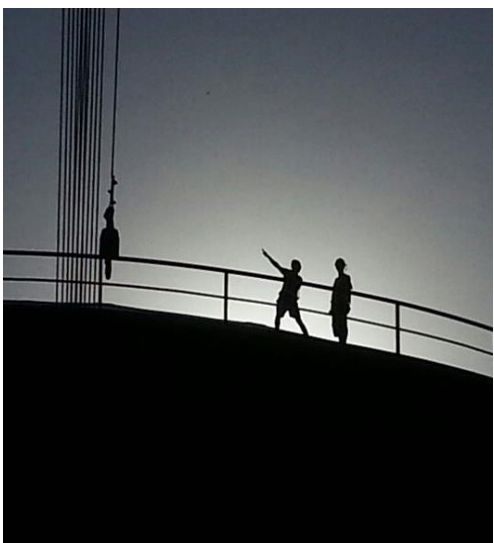
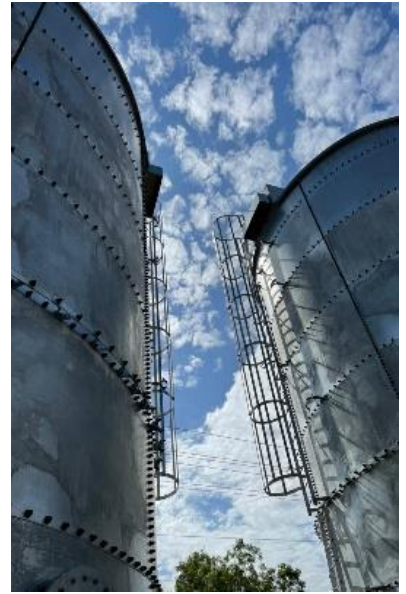
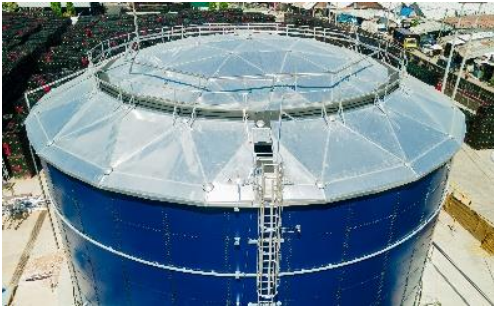
From Skin and Pontoon to Full Contact IFRs, our internal floating roofs are unmatched in design, quality, and craftsmanship which results in storage tank asset longevity.

Typical Application

- Bulk Liquid Storage Tanks
 - Integrated Storage Systems
 - Dry Bulk Storage Tanks
 - Potable Water Storage
 - Wastewater Storage
 - Frac Sand Storage Tanks & Facilities
 - Anaerobic Digester Tank
 - Fire Protection Tanks
 - Aluminum Domes
 - Internal and External Floating Roofs
 - Lime/Limestone Storage
 - Municipal Water Tanks
 - Tank Vapor Control Systems
 - Tank Relieve Valve
 - Flame and Detonation Arrestor
-



Projects



3,250m³ Raw Water Tank - Tanzanian Breweries / ABinBev (2023)



Scope: Supply and Installation
Product Stored: Raw Water Tank
Slotted Foundation with Geodesic Dome
Location: Dar es Salaam, Tanzania

Details:
Diameter: 21,35m
Height: 11,07m
Usable Capacity: 3,250m³
Design Specifications: AWWA-103-09
Manufacturer: Reliant



1. Civil Works



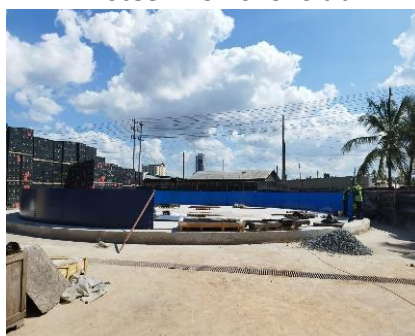
2. Steel Works for Slab



3. Slab Curing Process



4. Bottom Eave Angle Ready



5. Installation of 1st Ring



6. Lifting for 2nd Ring



7. Installation of 2nd Ring



8. Installation of Dome Frame



9. Completion of 2nd Ring



10. Completion of Dome



11. Completion of Dome



12. Completion of CIP Sprinklers



13. Lifting for 3rd Ring



14. Lifting of Tank for 5th Ring



15. Aerial View During Last Ring



16. Completion of Tank

3 x Copper Concentrate Tanks - Bisha Mining Limited - Eritrea (2022)



Scope: Replacement of Existing Tanks and Installation

Product Stored: Copper Concentrate Tanks

Steel Floor with Mixer and Open Top with Walkway

Location: Bisha, Eritrea

Details:

Tank 1

Diameter: 22'11" (6,99m)

Height: 14'11 1/2" (4.55m)

Usable Capacity: 38,900 Gallons
(150m³)

Tank 2

Diameter: 27' 8 5/15" (8.44m)

Height: 32' 3 7/8" (9.85m)

Usable Capacity: 132,100 Gallons
(500m³)

Tank 3

Diameter: 27' 8 5/15" (8.44m)

Height: 32' 3 7/8" (9.85m)

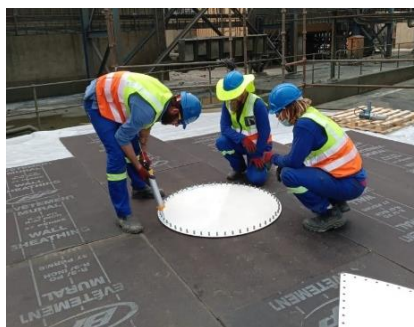
Usable Capacity: 132,100 Gallons
(500m³)

Design Specifications: Tarsco In-House

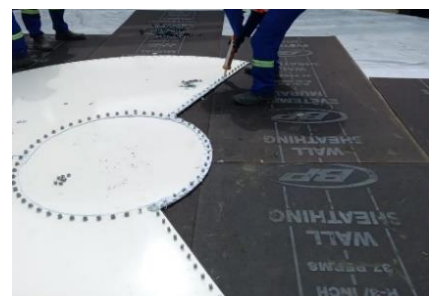
Manufacturer: Tarsco



1. Laydown Area



2. Steel Floor



3. Steel Floor



4. Steel Floor & Curb Angle



5. Installation of 1st Ring



6. Installation of 2nd Ring



7. Installation of 3rd Ring



8. Installation of 4th Ring



9. Installation of 5th Ring



10. Installation of 7th Ring



11. Eave Angle Installation



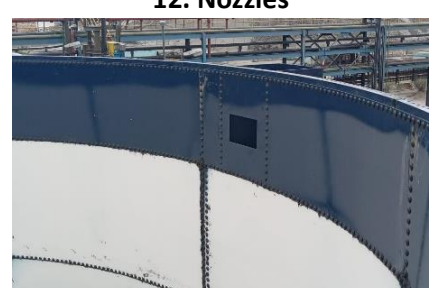
12. Nozzles



13. Anchor Bolt



14. Box Outlet



15. Square Box Outlet



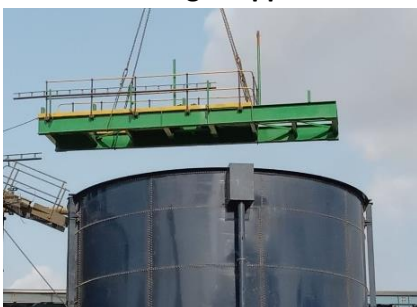
16. Bridge Supports



17. Tank Hydrostatic Test



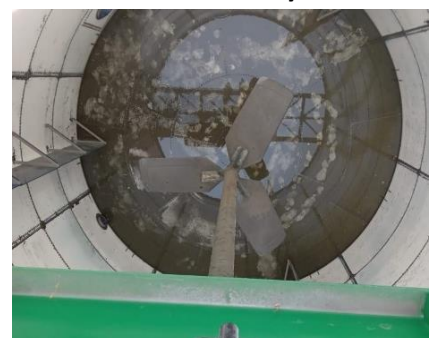
18. Walkway



19. Walkway Positioning



20. Walkway in Place



21. Mixer & Buffer Plates

1,795m³ Raw Water Tank - Serengeti Breweries / Diageo (2022)



Scope: Supply and Installation
Product Stored: Raw Water Tank
Concrete BSR Floor with Geodesic Dome Roof
Location: Mwanza, Tanzania

Details:

Diameter: 47.58' (14,49m)
Height: 37.59' (11,46m)
Usable Capacity: 475,134 Gallons (1,795m³)
Design Specifications: AWWA-103-09
Manufacturer: CST



1. Tank Offloading



2. BSR 1 Installation



3. BSR 2 Installation



4. BSR 3 Installation



5. BSR Concrete Floor



6. Eave Angle



7. Geodesic Dome Footing



8. Geodesic Dome 1st Ring



9. Geodesic Dome Framework



10. Geodesic Dome Sheeting



11. Geodesic Dome Sheeting



12. Inside Geodesic Dome Roof



13. Top View of Geodesic Dome



14. Installation of 2nd Ring



15. Installation of 3rd Ring



16. Wind Girders on the 3rd Ring



17. Inside of 4th Ring



18. Installation of 5th Ring



19. Completed 8th Ring



20. OSHA Approved Ladder



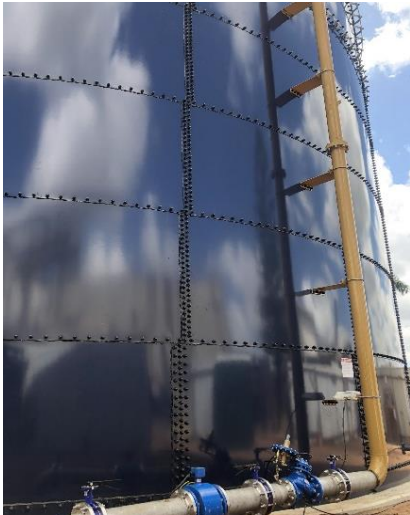
21. Partial Guardrail



22. Hydrostatic Test



23. Top View



24. Inlet Pipe



25. Liquid Level Indicator



26. Completed Tank

2 x 240m³ Fire Water Tank - Serengeti Breweries / Diageo (2022/1)



Scope: Supply and Installation

Product Stored: Fire Water

Concrete BSR Floor with Flat Steel Roof with Internal Liner

Location: Moshi, Tanzania

Details:

Tanks 1 & 2

Diameter: 20,34' (6,20m)

Height: 26,15' (7,98m)

Usable Capacity: 60,936 Gallons (231m³)

Design Specifications: NFPA-22

Manufacturer: CST - VULCAN



1. Tank Laydown Area



2. Foundation - 1st Tank



3. BSR Ring Installation - 1st Tank



4. Foundation Layer 2 - 1st Tank



5. Installation of 6th Ring - 1st Tank



6. Installation of 7th Ring - 1st Tank



7. Liner Installation - 1st Tank



8. BSR Completed - 2nd Tank



9. Installation of 7th Ring



10. Roof Installation - 2nd Tank



11. Synchronized Jacking - 2nd Tank



12. Installation of 5th Ring - 2nd Tank



13. Installation of 4th Ring - 2nd Tank



14. Installation of 3rd Ring - 2nd Tank



15. Synchronized Jacking - 1st Tank



16. Installation of 2nd Ring



17. Installation of 1st Ring



18. Installation of 6th Ring



20. Installation of 4th Ring



21. Installation of 2nd Ring



22. Tank Supply Project Finished



23. Installation of 1st Ring - 1st Tank



24. Completed with Piping



25. Fire Water Tanks



26. Kilimanjaro



27. Side View



28. Top View

6 Tanks for Newmont / DRA Global - Ghana (2022)



Scope: Supply and Supervision
Product Stored: Water Treatment Plant
Steel Floor with 12:2 Sloped Steel Roof
Location: Akeem, Ghana

Tanks #1

Diameter: 18' 5 9/16" (5,63m)
Height: 20' 10 1/2" (6,36m)
Usable Capacity: 39,800 Gallons (150m³)

Tanks #2

Diameter: 18' 5 9/16" (5,63m)
Height: 20' 10 1/2" (6,36m)
Usable Capacity: 39,800 Gallons (150m³)

Tanks #3

Diameter: 11' 5 1/2" (3,50m)
Height: 17' 3 1/16" (5,23m)
Usable Capacity: 12,800 Gallons (48.5m³)

Tanks #4

Diameter: 8' 7 1/8" (2,62m)
Height: 17' 3 1/16" (5,23m)
Usable Capacity: 6,100 Gallons (23m³)

Tanks #5

Diameter: 8' 7 1/8" (2,62m)
Height: 16' 0 5/8" (4,89m)
Usable Capacity: 6,700 Gallons (25.4m³)

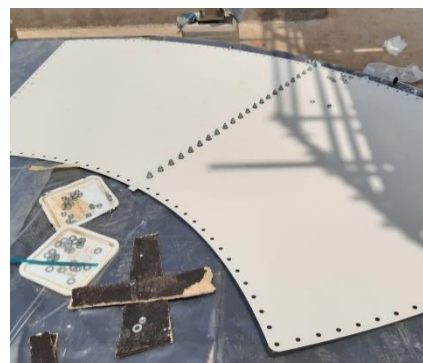
Tanks #6

Diameter: 8' 7 1/8" (2,62m)
Height: 6' 4 11/16" (1,95m)
Usable Capacity: 2,700 Gallons (10.2m³)

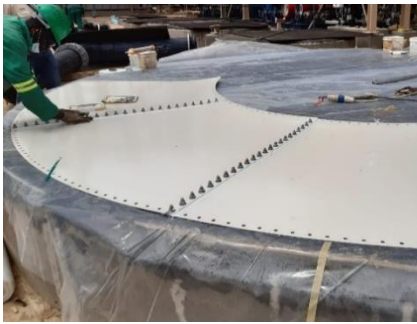
Design Specifications: AWWA 103
Manufacturer: TARSCO



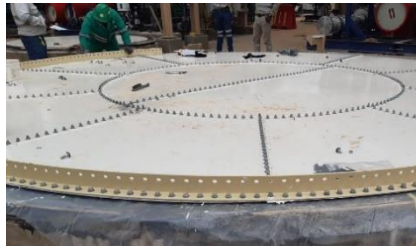
1. Delivery



2. Fiber Board



3. Steel Floor Panels



4. Bottom Angle



5. Build from the Bottom to Top



6. Installation of 1st Tank Ring



7. Tank Scaffold Build – Manhole



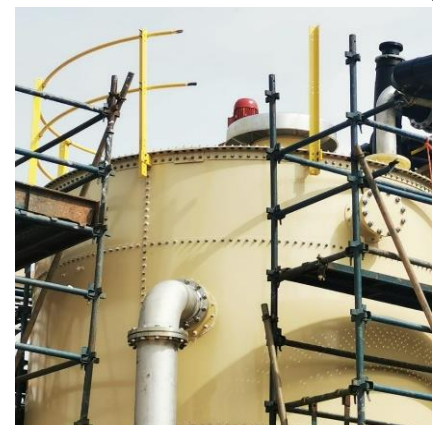
8. Small Tank Floor



9. Scaffold Build



10. Roof & Rafters



11. Tank Handrailing



12. Top View



13. Completed Tanks

8,024m³ Tank - Glencore / Prentec



Scope: Construction Only
Product Stored: Potable Water
Concrete Floor and 37,5m span Geodesic Dome
Location: Twee Fontein, South Africa

Details:
Diameter: 123'0 15/16" (37,52m)
Height: 24'9 13/16" (7,56m)
Usable Capacity: 2,119,710 Gallons (8,024m³)
Design Specifications: TC STANDARD
Manufacturer: TC



1. Offloading & Inventory



2. Base Set Ring



3. Concrete Slab



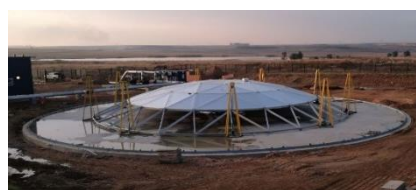
4. Apex Geodesic Dome



5. Dome Centre



6. Installation of 2nd Dome Ring



7. Installation of 3rd Dome Ring



8. Dome 4th Ring



9. Dome Sheeting 3rd Ring



12. Installation of 1st Tank Ring



15. Geodesic Dome Flashing



18. Installation of 2nd Tank Ring



21. Installation of 5th Tank Ring



10. Erection of Dome with Quad Pods



13. Dome Sheeting 5th Ring



16. Completion of Dome



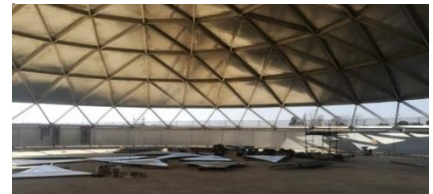
19. Installation of 3rd Tank Ring



22. Outlet Pipe



11. Installation of 5th Dome Ring



14. Final Dome Sheeting



17. Ladder & Platform Installation



20. Installation of 4th Tank Ring



23. Completed Dome



24. Top View

5,092m³ Storage Tank - Shell South Africa



Scope: Supply & Construction
Product Stored: Raw Water
Fire Water Tank Steel Floor and Steel Roof
Location: Johannesburg, South Africa

Details:
Diameter: 71' 3" (21.7m)
Height: 45' 04" (13.7m)
Working Capacity: 1,345,341 Gallons (5,092m³)
Based On: 28" (710mm) Freeboard
Design Specifications: AWWA D103-09 / NFPA-22
Manufacturer: USA Tanks



1. Steel Floor



2. Connection to Steel Floor



3. Installation of 1st Ring



4. Synchronized Jacking



5. Full Guard Rail



6. Spiral Staircase & Guard Rail

1,802m³ Storage Tank - Glencore Mozambique



Scope: Supply & Construction
Product Stored: Raw Water
Fire Water Tank Steel Roof and Concrete Floor
Location: Beira, Mozambique

Details:

Diameter: 44' 6 3/4" (13,6m)
Height: 42' 2 5/8" (12,9m)
Working Capacity: 476,300 Gallons (1,803m³)
Based On: 10" (25mm) Freeboard and 6 3/4"
Design Specifications: NFPA 22-03
Manufacturer: TC



1. Base Set Ring



2. Synchronized Jacking



3. Top Ring



4. Rafters



5. Roof Plates



6. Guard Rail



7. Installation of 1st Ring



8. Full Guard Rail & 2nd Ring



9. Ladder & 3rd Ring



10. Installation of 6th Ring



11. Installation of 7th Ring



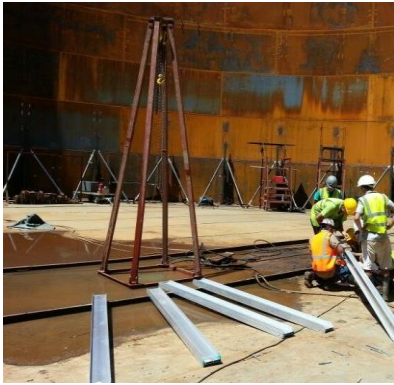
12. Completed 8th Ring

36m Dia. Geodesic Dome - Glencore Mozambique



Scope: Construction Only
 Product Stored: Diesel
 Aluminum Geodesic Dome
 Location: Beira, Mozambique

Details:
 Diameter: 118' 11" (36m)
 Manufacturer: HMT



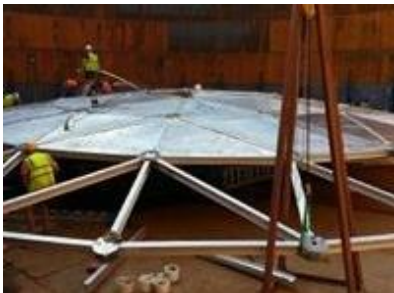
1. Apex



4. Installation of 2nd Dome Ring



7. Dome Sheeting 1st Ring



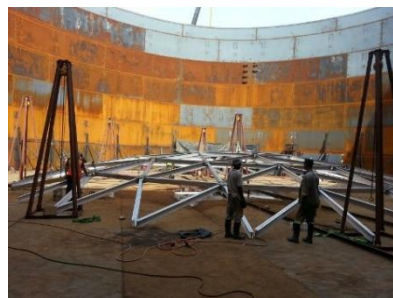
10. Dome Sheeting 2nd Ring



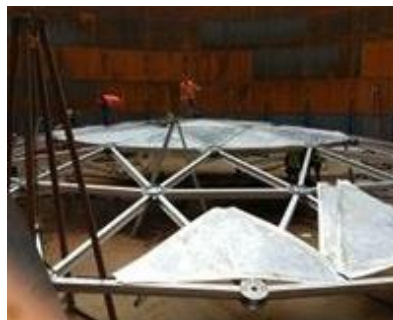
13. Completed Dome



2. Installation of 1st Dome Ring



5. Installation of 3rd Dome Ring



8. Dome Sheeting 2nd Ring



11. Dome Sheeting 4th Ring



14. Dome Being Lifted



3. Installation of 1st Dome Ring



6. Installation of 4th Dome Ring



9. Dome Sheeting 2nd Ring



12. Dome Inspection Window

36m Dia. Internal Floating Roof (IFR) - Glencore Mozambique



Scope: Construction Only
Product Stored: Diesel
Internal Floating Roof (IFR)
Location: Beira, Mozambique

Details:
Diameter: 118' 11" (36m)
Manufacturer: HMT



1. Completed IFR Top Section



2. Completed IFR Bottom Section



3. Completed IFR Bottom Section

Let's Talk Tanks!

Tanks Connected PTY LTD provides superior quality and cost-effective integrated Bolted Storage Tank Systems. We are driven to be the number one choice, and are committed to being customer-focused, and the safest supplier in the industry.

Our experience, trained installation crews, **Synchronized Tank Jacking Equipment**, and **Quad Pods** together with our partner's state-of-the-art coatings systems and patented designs give us the capacity to **supply** and **install** your Storage Tanks and Geodesic Domes.

Select **Tanks Connected PTY LTD** to be the supplier for your next project!

[Our Website](#) [Contact Us](#) [WhatsApp Sean](#) [Facebook](#) [Twitter](#) [LinkedIn](#)